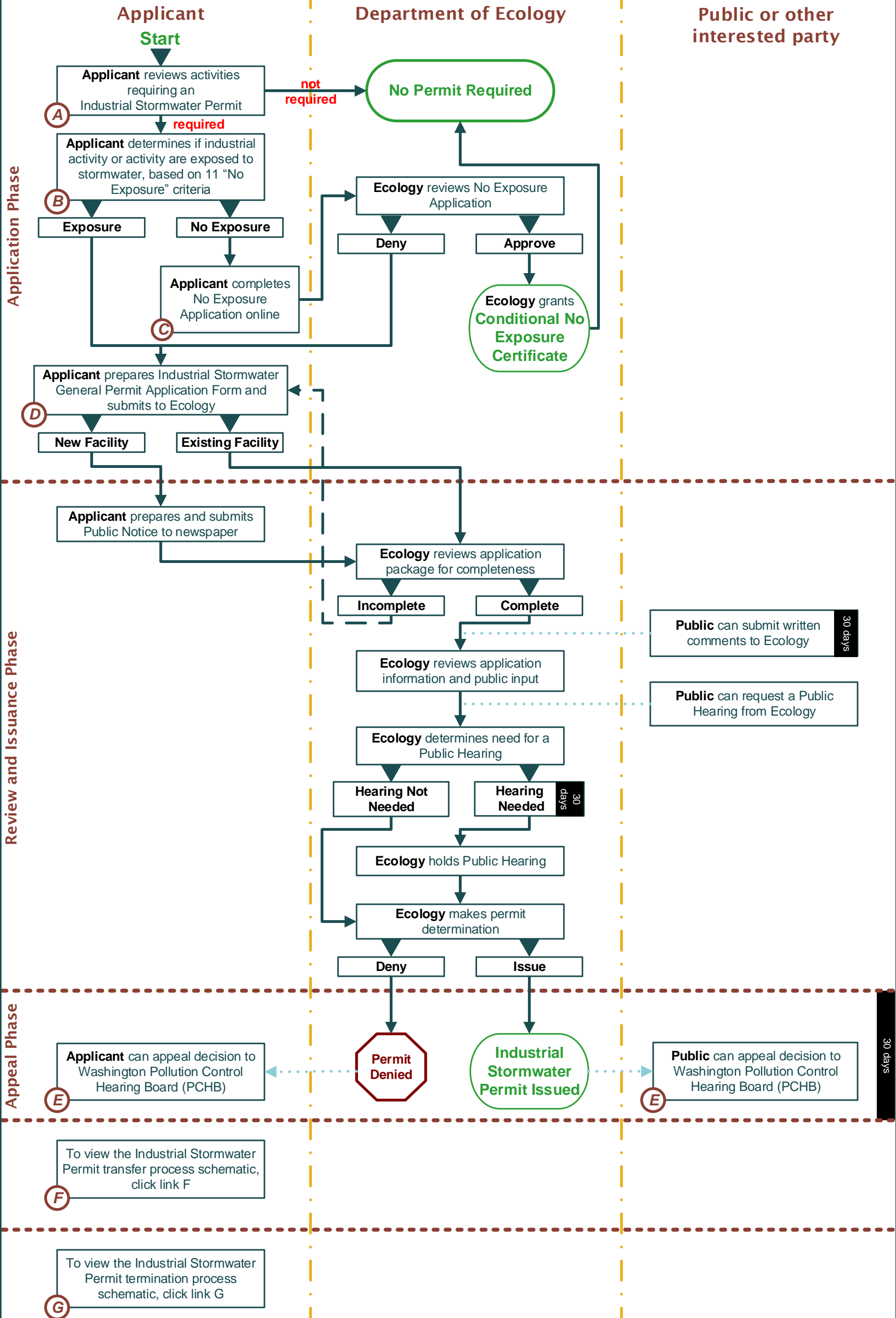


# NPDES Industrial Stormwater General Permit



**Legend:** (A) =Hyperlink    → =Progression    - → =Revision    .....▶ =Optional

## Link A

### Industrial Stormwater Permit S1.A

#### A. Facilities Required to Seek Coverage Under This General Permit

This statewide permit applies to facilities conducting industrial activities that discharge stormwater to a surface water body or to a storm sewer system that drains to a surface water body. Beginning on the effective date of this permit and lasting through its expiration date, the Permittee is authorized to discharge stormwater and conditionally approved non-stormwater discharges to waters of the state. All discharges and activities authorized by this permit shall be consistent with the terms and conditions of this permit.

The permit requires coverage for private entities, state, and local government facilities, and includes existing facilities and new facilities. Facilities conducting industrial activities listed in Table 1 or referenced in S1.A3 shall apply for coverage under this permit or apply for a Conditional No Exposure exemption, if eligible (Condition S1.F). The Department of Ecology (Ecology) may also require permit coverage for any facility on a case-by-case basis in order to protect waters of the state (Condition S1.B).

1. Facilities engaged in any industrial activities in Table 1 shall apply for coverage if stormwater from the facility discharges to a surface water body, or to a storm sewer system that discharges to a surface water body. The Standard Industrial Classification (SIC) groups generally, but not always, associated with these activities are listed in Table 1.

| Group Industrial Activities  | SIC Code      |
|--|---------------|
| Metal Mining   | 10xx          |
| Coal Mining  | 12xx          |
| Oil and Gas Extraction   | 13xx          |
| Mining and Quarrying of Nonmetallic Minerals, except Fuels (except facilities in SIC Codes 1411, 1422, 1423, 1429, 1442, 1446, 1445, 1459, and 1499; these facilities are covered under the Sand and Gravel General Permit)  | 14xx          |
| Food and Kindred Products  | 20xx          |
| Tobacco Products   | 21xx          |
| Textile Mill Products  | 22xx          |
| Apparel and Other Finished Products Made from Fabrics and Similar Material   | 23xx          |
| Lumber and Wood Products   | 24xx          |
| Furniture and Fixtures   | 25xx          |
| Paper and Allied Products  | 26xx          |
| Printing, Publishing and Allied Industries   | 27xx          |
| Chemicals and Allied Products  | 28xx          |
| Petroleum Refining and Related Industries (Except facilities in SIC 2951; these facilities are covered under the Sand and Gravel General Permit)   | 29xx          |
| Rubber and Miscellaneous Products  | 30xx          |
| Leather and Leather Products   | 31xx          |
| Stone, Clay, Glass, and Concrete Products (Except facilities in SIC 3272-3273; these facilities are covered under the Sand and Gravel General Permit)  | 32xx          |
| Manufacturing Industries   | 39xx          |
| Farm Product Storage   | 4221          |
| Refrigerated Storage   | 4222          |
| General Storage  | 4225          |
| Recycling facilities involved in the recycling of materials, including but not limited to, metal scrap yards, battery reclaimers, salvage yards, auto recyclers, and automobile junkyards.   | 5015 and 5093 |
| Steam Electric Power Generation  | N/A           |
| Active <i>landfills</i> , including, but not limited to, wood waste and inert <i>landfills</i> , transfer stations, open dumps, compost facilities, and <i>land application sites</i> , except as described in S1.C.6 or C.7.  | 4953          |
| Hazardous waste treatment, storage, and disposal (TSD) facilities, and recycling facilities regulated under Chapter 173-303 WAC.   | N/A           |
| Treatment works treating domestic sewage, or any other sewage sludge, or wastewater treatment device or system, used in the storage, recycling, and reclamation of municipal or domestic sewage (including land dedicated to the disposal of sewage sludge that are located within the confines of the <i>facility</i> ) with the design flow capacity of 1 million gallons per day (MGD) or more, or required to have a pretreatment program under 40 CFR §403. | 4952          |
| Transportation facilities which have <i>vehicle maintenance</i> activity, equipment cleaning operations, or airport deicing operations:  |               |
| • Railroad Transportation  | 40xx          |
| • Local and Suburban Transit and Interurban Highway Passenger Transportation   | 41xx          |
| • Motor Freight Transportation (except SIC 4221-25)  | 42xx          |
| • United States Postal Service   | 43xx          |
| • Water Transportation   | 44xx          |
| • Air Transportation   | 45xx          |
| • Petroleum Bulk Stations and Terminals  | 5171          |

2. Any *facility* that has an existing *National Pollutant Discharge Elimination System (NPDES)* permit which does not address all *stormwater discharges associated with industrial activity [40 CFR Subpart 122.26(b)(14)]* shall obtain permit coverage.
3. Any *inactive facility* which is listed under 40 CFR Subpart 122.26(b)(14) where *significant materials* remain onsite and are exposed to *stormwater* shall obtain permit coverage.

[Back to Schematic](#)

## Link E

### E. Appeal Information

#### Appeal of Permit Coverage

You have a right to appeal the terms and conditions of a general permit, as they apply to an individual discharger, to the Pollution Control Hearing Board (PCHB) within 30 days of the date of receipt of this letter. This appeal is limited to the general permit's applicability or non-applicability to a specific discharger. The appeal process is governed by chapter 43.21B RCW and chapter 371-08 WAC. "Date of receipt" is defined in RCW 43.21B.001(2).

To appeal, you must do the following within 30 days of the date of receipt of this letter:

- File your appeal and a copy of the permit cover page with the PCHB (see addresses below). Filing means actual receipt by the PCHB during regular business hours.
- Serve a copy of your appeal and the permit cover page on Ecology in paper form - by mail or in person (see addresses below). E-mail is not accepted.

You must also comply with other applicable requirements in chapter 43.21B RCW and chapter 371-08 WAC.

#### Location and Mailing Addresses:

##### Street Addresses

Department of Ecology  
300 Desmond Drive SE  
Lacey, WA 98503

Pollution Control Hearings Board  
1111 Israel Road SW, Suite 301  
Tumwater, WA 98501

##### Mailing Addresses

Department of Ecology  
Attn: Appeals Processing Desk  
PO Box 47608  
Olympia, WA 98504-7608

Pollution Control Hearings Board  
PO Box 40903  
Olympia, WA 98504-0903

[Back to Schematic](#)