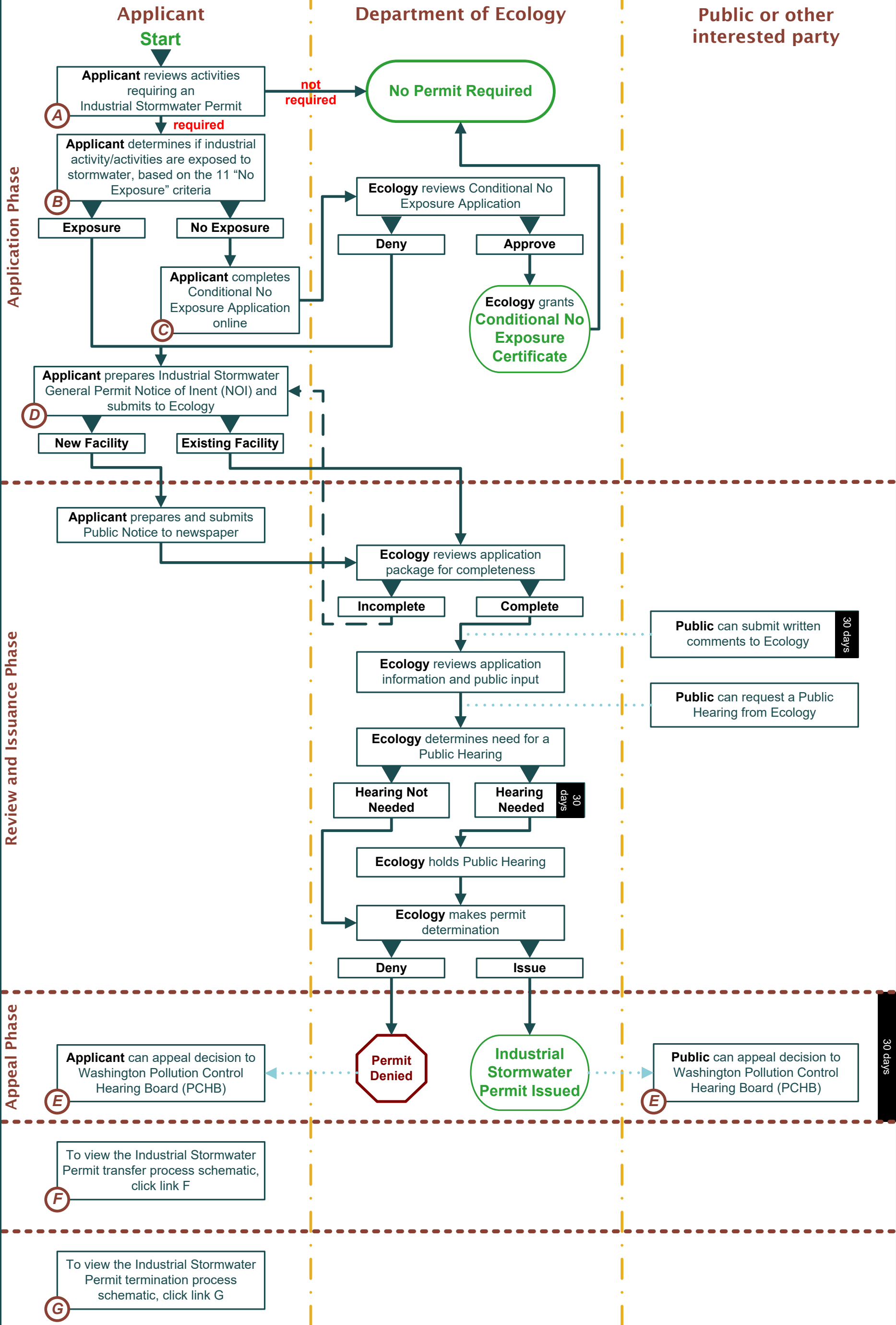


# Industrial Stormwater General Permit



**Legend:** (A) =Hyperlink    → =Progression    - → =Revision    ..... → =Optional

For more information on this permitting process visit the [Regulatory Handbook](#) and [Ecology's Industrial Stormwater General Permit page](#).

## Link A

### Industrial Stormwater Permit S1.A

#### A. Facilities Required to Seek Coverage Under This General Permit

This statewide permit applies to facilities conducting industrial activities that discharge stormwater to a surface water body or to a storm sewer system that drains to a surface water body. Beginning on the effective date of this permit and lasting through its expiration date, the Permittee is authorized to discharge stormwater and conditionally approved non-stormwater discharges to waters of the state. All discharges and activities authorized by this permit shall be consistent with the terms and conditions of this permit.

The permit requires coverage for private entities, state, and local government facilities, and includes existing facilities and new facilities. Facilities conducting industrial activities listed in Table 1 or referenced in S1.A3 shall apply for coverage under this permit or apply for a Conditional No Exposure exemption, if eligible (Condition S1.F). The Department of Ecology (Ecology) may also require permit coverage for any facility on a case-by-case basis in order to protect waters of the state (Condition S1.B).

1. Facilities engaged in any industrial activities in Table 1 shall apply for coverage if stormwater from the facility discharges to a surface water body, or to a storm sewer system that discharges to a surface water body. The Standard Industrial Classification (SIC) groups generally, but not always, associated with these activities are listed in Table 1.

**Table 1: Activities Requiring Permit Coverage and the Associated NAICS Groups**

Industrial Activities	NAICS Groups
Metal Ore Mining	2122xx
Coal Mining	2121xx
Oil and Gas Extraction	2111xx
Nonmetallic Mineral Mining and Quarrying, except Fuels (except facilities covered under the Sand and Gravel General Permit)	2123xx
Food, Beverage, and Tobacco Manufacturing	311xxx-312xxx
Textile and Textile Products Mills	313xxx-314xxx
Apparel Manufacturing	315xxx
Wood Products Manufacturing	321xxx, 113310 <sup>a</sup>
Furniture and Related Product Manufacturing	337xxx
Paper Manufacturing	322xxx
Printing and Related Support Activities	323xxx, 5111xx
Chemicals Manufacturing (including Compost Facilities)	325xxx
Petroleum and Coal Products Manufacturing (except facilities covered under the Sand and Gravel General Permit)	324xxx
Plastics and Rubber Products Manufacturing	326xxx
Leather and Allied Product Manufacturing	316xxx
Nonmetallic Mineral Product Manufacturing (except covered under the Sand and Gravel General Permit)	327xxx
Primary Metal Manufacturing	331xxx
Fabricated Metal Product Manufacturing	332xxx
Machinery Manufacturing	333xxx
Computer and Electronic Product Manufacturing	334xxx
Electrical Equipment, Appliance, and Component Manufacturing	335xxx
Transportation Equipment Manufacturing (except NPDES regulated boatyards)	336xxx
Miscellaneous Manufacturing	339xxx
Warehousing and Storage	493xxx, 531130
Recycling facilities involved in the recycling of materials, including but not limited to, metal scrap yards, battery reclaimers, salvage yards, auto recyclers, and automobile junkyards.	42314x and 42393x

2. Any facility that has an existing National Pollutant Discharge Elimination System (NPDES) permit which does not address all stormwater discharges associated with industrial activity [40 CFR Subpart 122.26(b)(14)] shall obtain permit coverage.
3. Any inactive facility which is listed under 40 CFR Subpart 122.26(b)(14) where significant materials remain onsite and are exposed to stormwater shall obtain permit coverage.

[Back to Schematic](#)

## Link E

### E. Appeal Information

#### Appeal of Permit Coverage

An applicant or any interested party has a right to appeal this permit decision to the Pollution Control Hearings Board (PCHB) within 30 days of the date of receipt of this permit. The appeal process is governed by Chapter 43.21B RCW and Chapter 371-08 WAC. "Date of receipt" is defined in RCW 43.21B.001(2).

You must also comply with other applicable requirements in Chapter 43.21B RCW and Chapter 371-08 WAC.

Read the [Pollution Control Board's Appeal Process](#) web page for more details.

#### Location and Mailing Addresses:

##### Street Addresses

Department of Ecology  
300 Desmond Drive SE  
Lacey, WA 98503

Pollution Control Hearings Board  
1111 Israel Road SW, Suite 301  
Tumwater, WA 98501

##### Mailing Addresses

Department of Ecology  
Attn: Appeals Processing Desk  
PO Box 47608  
Olympia, WA 98504-7608

Pollution Control Hearings Board  
PO Box 40903  
Olympia, WA 98504-0903

[Back to Schematic](#)